

9. Puka Place

One bedroom apartment on second floor over storage room
Queen bed
Living-kitchen-dining area
Bathroom with shower
Screened in Porch



Woodland Park

is now on the internet!

For color photos come see us at:

<https://www.woodlandparkcottages.com>



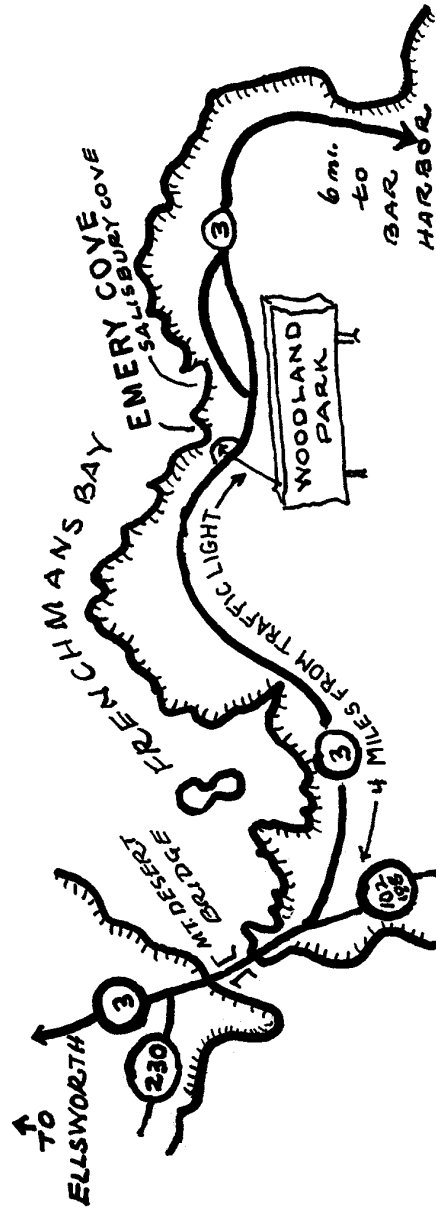
We also have a listing of cabin availability at our site:



Please visit our site or drop us an e-mail at:
paul@woodlandparkcottages.com

WOODLAND PARK

BAR HARBOR, MAINE



Garden and Bay View

WOODLAND PARK

HOUSEKEEPING COTTAGES

3 Woodland Loop

BAR HARBOR, MAINE 04609

(207) 288-4016

<http://www.woodlandparkcottages.com>

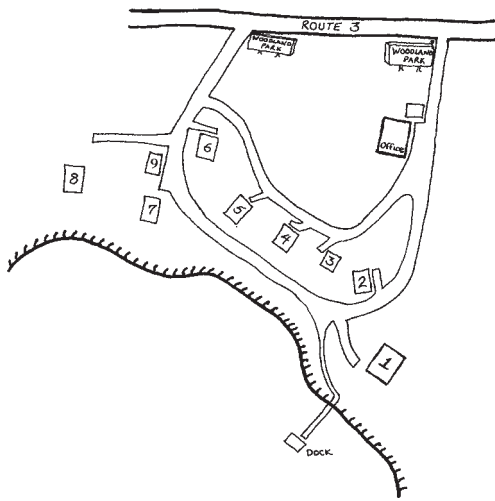
3 1/2 Miles to the Acadia National Park Entrance for hiking, biking, carriage rides, and swimming

6 miles to downtown Bar Harbor or take the free Island Explorer bus

Eight rustic cottages among tall fragrant evergreens by beautiful, secluded Emery Cove in Frenchman Bay



Our dock and shore



Layout of Cabins

Completely furnished for light house-keeping, including gas stove with oven, refrigerator, cooking and eating utensils, linens for bed, bath and kitchen, electric heat, and cribs available

Dock, rowboats, picnic tables, and barbecue grills are available for use by guests.

No smoking in cottages; No pets

Check-in time: 4:00 p.m.

Check-out time : 10:00 a.m.



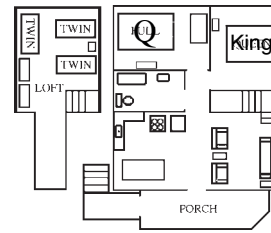
Ledge View

Cabin

Layout

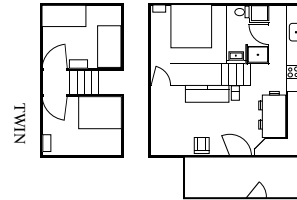
Description

1. Aloha



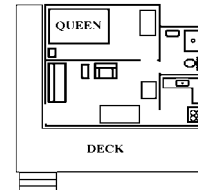
One bedroom with king bed
One bedroom with queen bed
Loft with 3 twin beds
Full bathroom
Living-kitchen-dining room
Screened porch

2. Kamp Koze



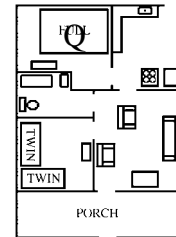
Bedroom with queen bed
Bedroom with 2 twin beds
Bedroom with 1 full bed
Living-kitchen-dining room
Bathroom with shower
Screened porch

3. Sea Breeze



Bedroom with queen bed
Bathroom with shower
Living-dining room
Kitchen
Deck

4. Mt. View

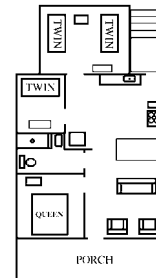


Bedroom with Queen
Bedroom with 2 twin beds
Bathroom with tub and shower
Living-dining room
Kitchen
Screened porch

5. Bay View

6. Garden

7. Ledge View



Bedroom with queen bed
Bedroom with two twin beds
Bedroom with one twin bed
Living-kitchen-dining room
Bathroom with shower
Closed-in porch

8. Parrot



Bedroom with Queen bed
Second floor with 3 twin beds
2 Full bathrooms
Living-dining-kitchen room
Dishwasher, Gas "Wood" Stove
Closed-in porch

Woodland Park Cottages 2021 Price List	Price per Additional Person	1. Aloha	2. Koze 7. Ledge View	4. Mt. View 5. Bay View 6. Garden	8. Parrot	3. Sea Breeze 9. Puka Place
# People		1-5	1-5	1-4	1-5	1-2
May 29 - June 5	\$110	\$1282	\$1091	\$936	\$1497	\$738
June 5 - 19	\$125	\$1382	\$1191	\$1036	\$1697	\$838
June 19 - Aug 28	\$150	\$1727	\$1489	\$1295	\$2121	\$1048
Aug 28 - Sept 18	\$125	\$1382	\$1191	\$1036	\$1697	\$838
Sept 18 - Oct 9	\$110	\$1282	\$1091	\$936	\$1497	\$738
Oct 9- 16	\$100	\$1132	\$941	\$786	\$1347	\$588

Personal Checks, Travelers Checks, Cash, Credit Cards (for balance due) accepted

\$300 deposit for each week reserved, due within 10 days.
Balance of rent plus 9%* Maine lodging tax due upon arrival
(* or whatever the current tax rate is at time of arrival)

2 day cancellation notice required for refund of deposit, less \$50/week for processing
Refunds for late cancelations made only if dates reserved are filled completely at full price

NO SMOKING; NO PETS