

9. Puka Place

One bedroom apartment on second floor over storage room
Queen bed
Living-kitchen-dining area
Bathroom with shower
Screened in Porch



Woodland Park

is now on the internet!

For color photos come see us at:

<http://www.woodlandparkcottages.com>



We also have a listing of cabin availability at our site:

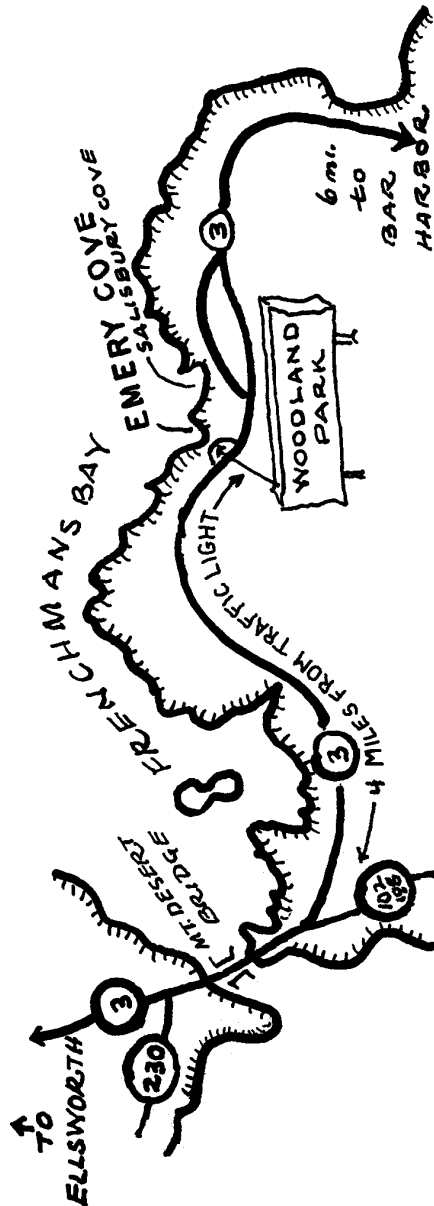


Please visit our site or drop us an e-mail at:

paul@woodlandparkcottages.com

WOODLAND PARK

BAR HARBOR, MAINE



Garden and Bay View

WOODLAND PARK

HOUSEKEEPING COTTAGES

3 Woodland Loop

BAR HARBOR, MAINE 04609

(207) 288-4016

<http://www.woodlandparkcottages.com>

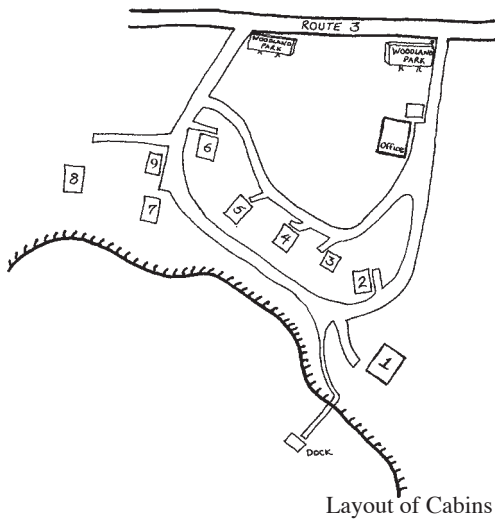
3 1/2 Miles to the Acadia National Park Entrance for hiking, biking, carriage rides, and swimming

5 1/2 miles to the "Cat" terminal for trips to Canada

Eight rustic cottages among tall fragrant evergreens by beautiful, secluded Emery Cove in Frenchman Bay



Our dock and shore



Layout of Cabins

Completely furnished for light house-keeping, including gas stove with oven, refrigerator, cooking and eating utensils, linens for bed, bath and kitchen, electric heat, and cribs available

Dock, rowboats, picnic tables, and barbecue grills are available for use by guests.

No smoking in cottages; No pets

Check-in time: 3:00 p.m.

Check-out time : 11:00 a.m.

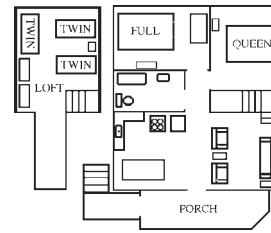


Ledge View

Cabin

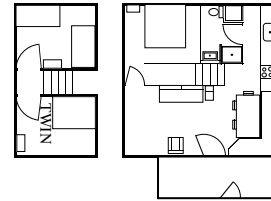
1. Aloha

Layout



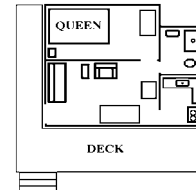
One bedroom with queen bed
 One bedroom with full bed
 Loft with 3 twin beds
 Full bathroom
 Living-kitchen-dining room
 Screened porch

2. Kamp Koze



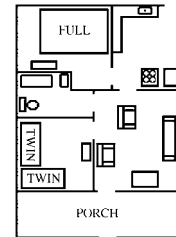
Bedroom with queen bed
 Bedroom with 2 twin beds
 Bedroom with 1 full bed
 Living-kitchen-dining room
 Bathroom with shower
 Screened porch

3. Sea Breeze



Bedroom with queen bed
 Bathroom with shower
 Living-dining room
 Kitchen
 Deck

4. Mt. View

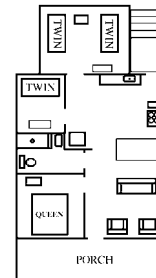


Bedroom with Queen
 Bedroom with 2 twin beds
 Bathroom with tub and shower
 Living-dining room
 Kitchen
 Screened porch

5. Bay View

6. Garden

7. Ledge View



Bedroom with queen bed
 Bedroom with two twin beds
 Bedroom with one twin bed
 Living-kitchen-dining room
 Bathroom with shower
 Closed-in porch

8. Parrot



Bedroom with Queen bed
 Second floor with 3 twin beds
 2 Full bathrooms
 Living-dining-kitchen room
 Dishwasher, Gas "Wood" Stove
 Closed-in porch

Woodland Park Cottages 2010 Price List	Price per Additional Person	1. Aloha	2. Koze 7. Ledge View	4. Mt. View 5. Bay View 6. Garden	8. Parrot	3. Sea Breeze 4. Puka Place
# People		1-5	1-5	1-4	1-5	1-2
May 8 - 29	\$60	\$858	\$696	\$579	\$1,123	\$432
May 29 - June 19	\$80	\$1,058	\$896	\$779	\$1,323	\$611
June 19 - Aug 28	\$100	\$1,323	\$1,120	\$974	\$1,654	\$790
Aug 28 - Oct 2	\$80	\$1,058	\$896	\$779	\$1,323	\$611
Oct 2 - 16	\$70	\$958	\$796	\$679	\$1,223	\$532

Personal Checks, Travelers Checks, Cash, Credit Cards (for balance due) accepted

\$200 deposit for each week reserved, due within 10 days.
Balance of rent plus 7% Maine lodging tax due upon arrival

120 day cancellation notice required for refund of deposit, less \$50/week for processing.
Refunds for late cancelations made only if dates reserved are filled completely

NO SMOKING; NO PETS