

9. Puka Place

- One bedroom apartment on second floor over storage room
- Queen bed
- Living-kitchen-dining area
- Bathroom with shower
- Screened in Porch



# Woodland Park

is now on the internet!

For color photos come see us at:

<http://www.woodlandparkcottages.com>



We also have a listing of cabin availability at our site:

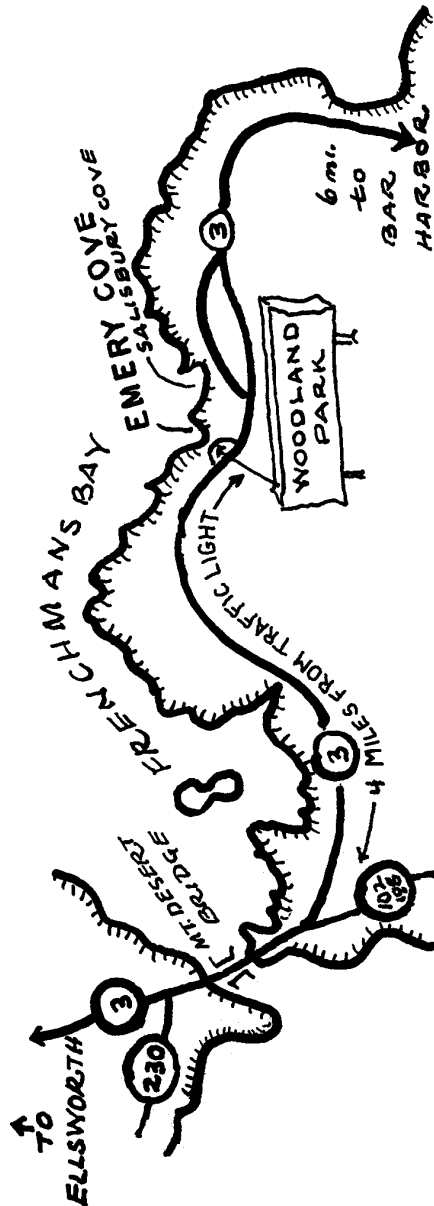


Please visit our site or drop us an e-mail at:

[paul@woodlandparkcottages.com](mailto:paul@woodlandparkcottages.com)

# WOODLAND PARK

B A R H A R B O R , M A I N E



Garden and Bay View

## WOODLAND PARK

HOUSEKEEPING COTTAGES

3 Woodland Loop

BAR HARBOR, MAINE 04609

(207) 288-4016

<http://www.woodlandparkcottages.com>

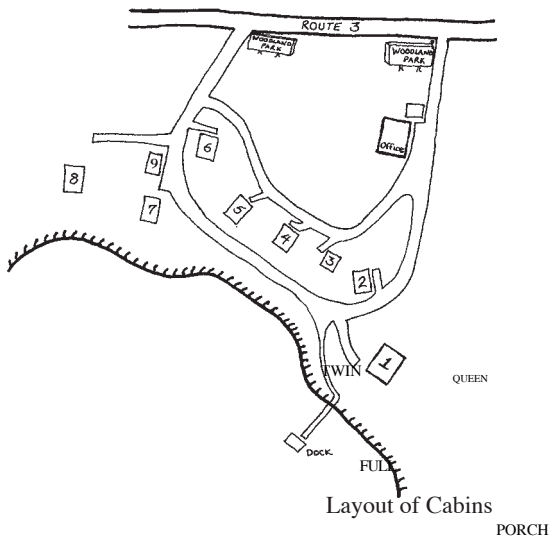
3 1/2 Miles to the Acadia National Park Entrance for hiking, biking, carriage rides, and swimming

5 1/2 miles to the "Cat" terminal for trips to Canada

Eight rustic cottages among tall fragrant evergreens by beautiful, secluded Emery Cove in Frenchman Bay



Our dock and shore



Completely furnished for light house-keeping, including gas stove with oven, refrigerator, cooking and eating utensils, linens for bed, bath and kitchen, electric heat, and cribs available

Dock, rowboats, picnic tables, and barbecue grills are available for use by guests.

No smoking in cottages; No pets

Check-in time: 3:00 p.m.  
Check-out time : 11:00 a.m.

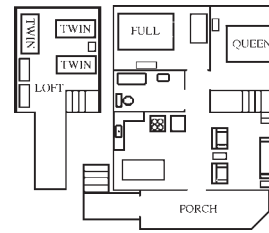


Ledge View

## Cabin

1. Aloha

## Layout



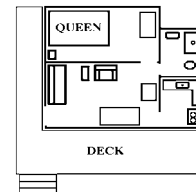
One bedroom with queen bed  
One bedroom with full bed  
Loft with 3 twin beds  
Full bathroom  
Living-kitchen-dining room  
Screened porch

2. Kamp Koze



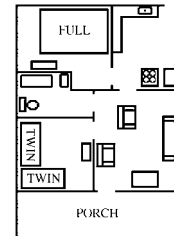
Bedroom with queen bed  
Bedroom with 2 twin beds  
Bedroom with 1 full bed  
Living-kitchen-dining room  
Bathroom with shower  
Screened porch

3. Sea Breeze



Bedroom with queen bed  
Bathroom with shower  
Living-dining room  
Kitchen  
Deck

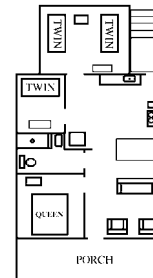
4. Mt. View



5. Bay View  
6. Garden

Bedroom with full bed  
Bedroom with 2 twin beds  
Bathroom with tub and shower  
Living-dining room  
Kitchen  
Screened porch

7. Ledge View



Bedroom with queen bed  
Bedroom with two twin beds  
Bedroom with one twin bed  
Living-kitchen-dining room  
Bathroom with shower  
Closed-in porch

8. Parrot



Bedroom with Queen bed  
Second floor with 3 twin beds  
2 Full bathrooms  
Dishwashing Machine  
Living-dining-kitchen room  
Closed-in porch  
Gas "Wood" Stove

<b>Woodland Park Cottages 2010 Price List</b>	Price per Additional Person	1. Aloha	2. Koze 7. Ledge View	4. Mt. View 5. Bay View 6. Garden	8. Parrot	3. Sea Breeze 4. Puka Place
# People		1-5	1-5	1-4	1-5	1-2
May 8 - 29	\$60	\$858	\$696	\$579	\$1,123	\$432
May 29 - June 19	\$80	\$1,058	\$896	\$779	\$1,323	\$611
June 19 - Aug 28	\$100	\$1,323	\$1,120	\$974	\$1,654	\$790
Aug 28 - Oct 2	\$80	\$1,058	\$896	\$779	\$1,323	\$611
Oct 2 - 16	\$70	\$958	\$796	\$679	\$1,223	\$532

Personal Checks, Travelers Checks, Cash, Credit Cards (for balance due) accepted

\$200 deposit for each week reserved, due within 10 days.  
Balance of rent plus 7% Maine lodging tax due upon arrival

120 day cancellation notice required for refund of deposit, less \$50/week for processing.  
Refunds for late cancelations made only if dates reserved are filled completely

**NO SMOKING; NO PETS**